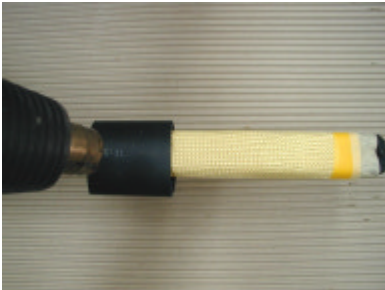


Trimming and fitting batten ends: with Kevlar wrap

Kevlar wrap is not fastened on to the outboard ends of batten sections. The wrap can easily be slid back so the batten can be trimmed.



3a. Mark batten for length. Position heat-shrink rubber over the mark.

3b. Use heat-gun to shrink heat-shrink over the mark.



4. Cut batten to required length (through heat-shrink) using a hacksaw.



5. Re-insert leech end plug.

NOTE: Sometimes plug may have to be sanded to fit if the batten has been shortened appreciably.

If you have any questions about joining battens, please contact C-Tech by e-mail (info@sailbattens.com)