

Instructions for cutting and joining CT Sailbattens

CT Sailbattens over 8.2 metres long (and delivered by Airfreight) are supplied with pre-fitted sleeve joins that must be glued into place.



One batten section is supplied with a solid inner joiner ...

...while the other has a pre-fitted outer sleeve.



Each batten section is labelled on both sides of the join. Care must be taken to join the correct sections together.

Batten sections have been pre-fitted (dry) before shipping, so the joins should fit together with no sanding required.

Occasionally a batten section may need to be rotated 180° to fit correctly onto the joiner.

To join batten sections



- 1a. Mask off batten sections on either side of the join so that epoxy resin doesn't ooze onto exterior surface.
- 1b. Mix epoxy resin and add glue filler (Aerosil or similar product).
- 1c. Spread glue smoothly over solid inner joiner and apply to the inside of the sleeve section (as far down as possible).
- 2a. Slide the two batten sections together, making sure that both sections are pushed hard together. (Pressure may have to be exerted, which will cause glue to be forced out of the join).
- 2b. Allow glue to cure then remove masking tape.

Trimming and fitting batten ends

Battens are manufactured approx. 100mm longer than design length and will need to be trimmed to the correct length.

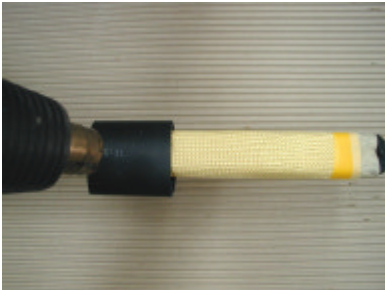


- 3a. Remove leech end plug (if supplied) and wrap batten at cutting position with masking tape to stop carbon splintering.
- 3b. Cut batten to required length (through masking tape) using a hacksaw.
- 3c. If the batten has been shortened considerably the leech end-plug may need to be sanded to fit.

If you have any questions about joining battens, please contact C-Tech by e-mail (info@sailbattens.com)

Trimming and fitting batten ends: with Kevlar wrap

Kevlar wrap is not fastened on to the outboard ends of batten sections. The wrap can easily be slid back so the batten can be trimmed.



3a. Mark batten for length. Position heat-shrink rubber over the mark.

3b. Use heat-gun to shrink heat-shrink over the mark.



4. Cut batten to required length (through heat-shrink) using a hacksaw.



5. Re-insert leech end plug.

NOTE: Sometimes plug may have to be sanded to fit if the batten has been shortened appreciably.

If you have any questions about joining battens, please contact C-Tech by e-mail (info@sailbattens.com)